

# Logan County Historical Society Membership Newsletter

Volume 1, Issue 2

Fall, 2014

## Society News

Greeting LCHS members and future members,

First, I want to thank everyone for the positive feedback from our first newsletter. I am pleased to report that we now have a growing base of new membership support. I am also pleased to announce that the new basketball text panels have been presented to the Territorial Capital Sports Museum and the LCHS has a new intern for the fall semester who will be helping with community projects.

Over the last three months, the LCHS has been busy helping to support the community effort to save the Excelsior Library building. While the initial efforts have secured time, community efforts are now underway to plan for the future of the structure. The LCHS has helped with this cause by completing the paperwork allowing the State Preservation office to confirm that the Excelsior Library is eligible for the National Register under Criteria A for its social history. For a building to be eligible it needs to be over 50 years old, have original integrity in appearance, and have historical significance to a person, events or activities connected to a broad pattern of history. Confirming that a structure is eligible is only a preliminary step in the National Register process, actually listing a structure is a lengthy process.

In our last issue, I wrote about our new trolley tours which we have been working to premier for well over a year. I regret to inform you that our new tours will have to be placed on hold indefinitely due to issues beyond our control. Without going into great detail, the trolley tours were being operated on an exemption, which is no longer available. First Capital Trolley will be continuing to operate a historic route at 12:00 and 2:00 Monday-Saturday year round. We are currently working to update the route to meet regulations which include operating community stops along the route. We are also looking at more long term solutions to keep the historic tours in Guthrie.

Amy Loch

LCHS Executive Director/Coordinator

## In this Issue

New Intern

Excelsior Library

Trolley News

Employees Give Back

LC Happenings

Museum News

Indian Meridian Marker

Camp Cimarron

Children's Page

LCHS Membership

Museum Directory

## New Intern

The Logan County Historical Society welcomes our new fall intern **Michelle McBride**.

Michelle is originally from Michigan. Her husband is in the Air Force stationed at Tinker. She is currently pursuing her Master's Degree in History-Museum Studies at UCO and hopes to work with museum collections when she graduates. Michelle will be helping with some museum projects and will be bringing the LCHS Facebook page to life.

Like 

*The mission of the Logan County Historical Society is to conduct its activities in a manner which shall serve to preserve and perpetuate the history of Logan county and its people.*



## Excelsior Library

Before the new central library opened in 1970, some of you might remember going to the Excelsior Library located at 323 S. 2nd St. If you are old enough you might even remember going to the original Excelsior Library at this site. Do you remember the Excelsior as a library, community center, police station or arts center? If so please help save these memories by letting us know. We will be sharing some of the best stories in our next issue and all stories will be given to the Black Heritage Center in Langston to be preserved. Not a writer, that's



ok, just let us know you have a story to tell and we will take care of the rest. We would also appreciate copies of any images you may have.

Today, after many years of use in the community, the Excelsior is in need of some major repairs in order to remain a community asset. Like so many buildings of the 1950s, the Excelsior has a flat roof which is today leaking and causing major issues. The Excelsior also needs additional repairs in order to make it useable. If you would like to help save the Excelsior contact Evelyn Nephews at 405-282-2083.

## Trolley News

- The trolley welcomes four new employees to the team Richard, Patricia, Harold, and Deana
- \_\_\_ passengers rode the trolleys this August
- The trolley provided transportation for the YMCA summer program all summer providing transportation for field trips to the pool, library, parks, museums, around Guthrie and surrounding areas

## Trolley Employees Give Back to the Community

- Scott Bryan organized a concert fundraiser for three families who lost everything in the wild fire, raising almost \$3,000
- Five FCT employees helped clean up a fire damaged home from the wild fire, two of these employees personally lost everything in the wild fire

## Frontier Country Museum

The Frontier Country Museum opened in 2003 on the north end of Crescent. Operated by a dedicated staff of volunteers the museum is open 6 days a week. The museum has 46 exhibits, a rotating art display, and church and school house on the grounds. This summer the museum held their annual Country Garden Walk, featuring the Bluebird Farm, a Foucart Award winner. They had their school house repainted and are looking forward to beginning school programs.

The current artist on display at the museum is **Shiko Shiraiwa**, an native of Japan, who currently works at the Melton Gallery at UCO where he is working towards his second masters degree. The next artist will be **Dottie Jennings**. Her work will be on display this September and October.

Anyone interested in showing their art work or volunteering at the museum should contact Sandra Voskuhl, Board President at 405-969-3660.



## Logan County Happenings

**Oklahoma Territorial Museum** will be opening a new exhibit on **August 29th**, *"The Edmond Sun: Connecting Our Community 1889-2014."* The museum is also being honored by the **Oklahoma Museum Association** for their recent exhibit, *"The Life & Death of An American Outlaw: The Story of Elmer McCurdy."* and their related publication *"Osage Hills Detective Stories"* which both won top honors in their categories.

**The Territorial Capital Sports Museum** raised almost \$1,500 for the museum through a fundraiser dinner. Over 110 University of Oklahoma alumni athletes gathered at the museum on July 31st for the event. Recently, the museum also had guests from the Chickasaw Cultural Center who have offered to help expand the sport's museum stick ball exhibit from stick ball to baseball. Their visit also inspired Richard, the Museum Director, to reach out to the Territorial Museum for help in better displaying the museum's collection of sports jerseys. In addition, the sports museum participated in honoring Patty Cox Roloff, first female minor league manager.

The **Oklahoma Frontier Drug Store Museum** will be hosting a **golf tournament** to benefit the museum this fall. For more information contact Tom Noles, event organizer at 405-641-0082 or [tnoles@sbcglobal.net](mailto:tnoles@sbcglobal.net). In other news, the Drug Store museum had a new display case donated to the museum by Tom Ayres R. Ph., Norman, Oklahoma. The museum also welcomes a new class of students from the Southwestern School of Pharmacy at Weatherford. Each fall and spring semester pharmacy students take turns staffing the museum on Saturdays helping keep the museum open for visitors. As always garden volunteers are still needed. Contact Pam Ekiss, Director 405-282-1895.

### Indian Meridian Marker

The monument, erected in about 1922, marks the meridian used in 1870 to divide the Oklahoma and Indian territories. It remains the reference point for all land surveys in Oklahoma. Roosevelt Haney Jr, played the lead role in coordination and restoration of the Historic Indian Meridian Marker in the town of Langston. Bricks were sold and sponsors were obtained to replace the informative plaque and improve the appearance of the marker. Major Sponsors

included: Langston Economic Development Authority, Langston University Center of Community Engagement, Logan County, Oklahoma Gas & Electric, Oklahoma Society of Land Surveyors, Tinker Federal Credit Union, and Warren Monument Company.





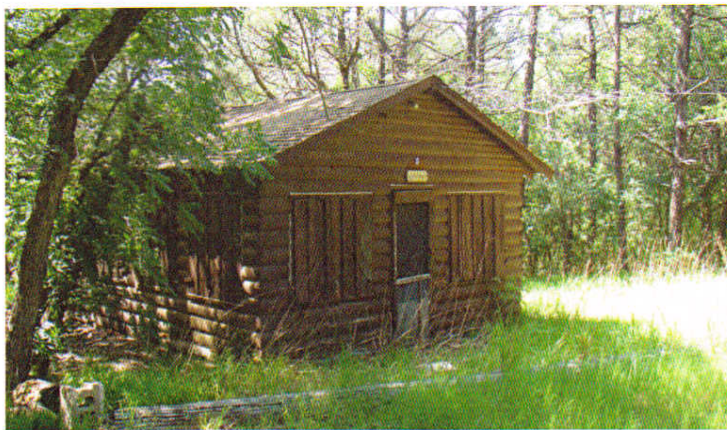
What are some of your favorite childhood memories? For my friend, Bonnie Winslow, Camp Cimarron holds a special place in her heart. This 4th of July, she invited me along as she went back to visit the camp. If you grew up in this area, you too may have spent time at Camp Cimarron, which is just east of Coyle along the Cimarron River. The camp that was operated by the Camp Fire Girls, now known as Campfire USA, finally closed in 2007 after seventy years of operation. The camp was recently divided in two sections and sold to private individuals. One of the new owners, Mark, was gracious enough to let us look around.

While much of the camp that Bonnie remembered remained, parts had been added in more recent years, and some older parts had fallen into severe disrepair. Those of you that remember the camp will be happy to know that the new owner intends to keep parts of the camp and has even already taken his boy scout troop camping there.

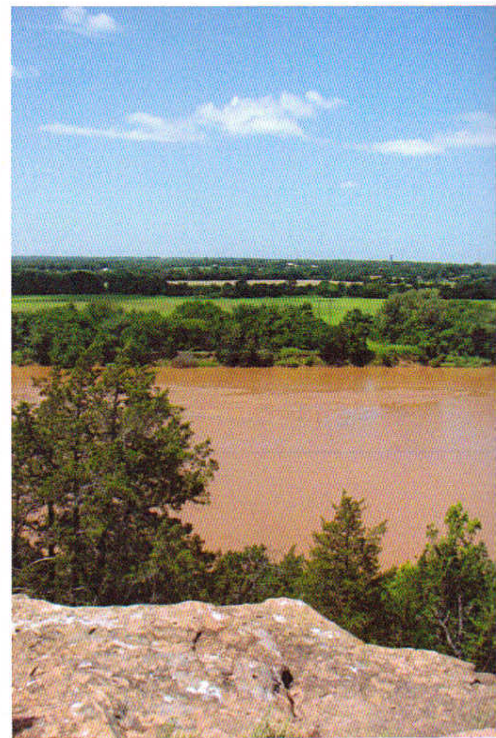
Bonnie was a councilor in training at the camp in 1968 and 1969 and councilor in 1970. She hadn't been back since, having spent much of her adult life working for the National Park Service in the southwest. It didn't take long for her memories to start to fall into place as we walked around the camp.

First we found the old camp lodge, which is still in good condition. Next we wandered around the cabin areas, found the wigwams and then the water tower with many names still just as legible as the day they were added. We quickly found the names of the councilors that Bonnie worked with and then after some looking we found her own faded name on the tower. Some parts of the camp look just as they did at the end of the last season, seemingly unaware that there would not be a next summer. Mattresses and brooms remained in the cabins, the stables still had horse tack hanging by the stalls, and papers and badges remained in the office cabin. The wagon trains and ca-boose have seen better years but the tent cabins nearby have been used by a boy scout troop this past year. While time changes all things, memories remain and new memories continue to be made. I want to thank Bonnie for allowing me to come with on this journey. If you would like to share your memories of Camp Cimarron, a Facebook page has been set up for the camp.





## Camp Cimarron





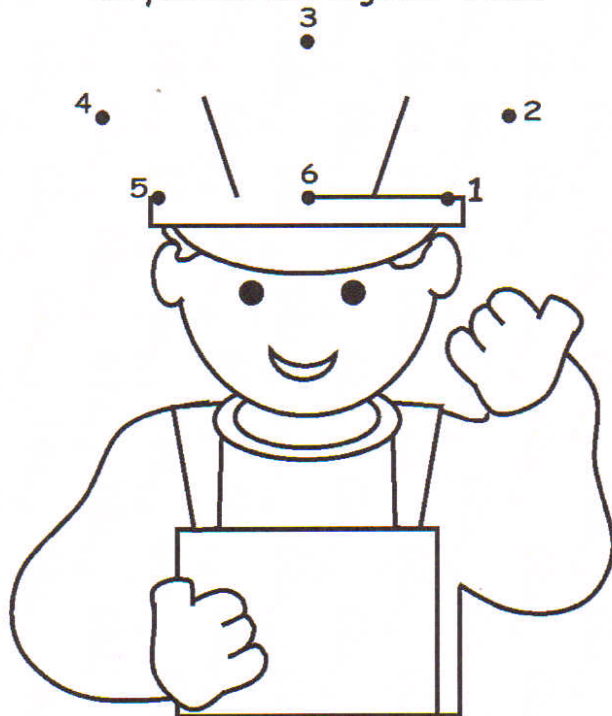
# Children's Page

6

An excerpt from "A Day in My Life, 1903" You see over there to your left that is going to be the new depot. I can't wait for it to be finished. It is going to be so much bigger than our current depot. I have heard there is even going to be a new restaurant inside. I hope I get to eat there one day. I love going down to the tracks to watch the trains. They are always coming and going from the station leaving a trail of smoke behind. Every day trains come filled with supplies. I can only imagine what it might have looked like on the day of the land run. I have heard stories of trains arriving one after another loaded so full that passengers were even on the roofs of the rail cars.



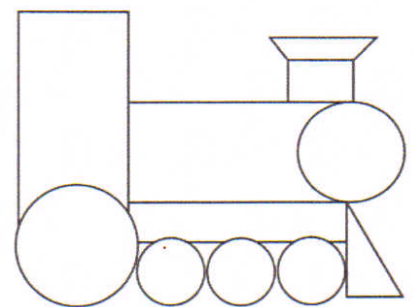
Can you find the engineer's hat?



For more creative learning ideas check out  
[www.makinglearningfun.com](http://www.makinglearningfun.com)

## Train Snacks

- Provide children with a variety of different shaped crackers
- Cut cheese into triangles or rectangles
- Allow them to use the snacks to create edible trains



## History Day Kick Off

As the school year kicks off, a new year of History Day begins. The 2014-2015 theme is *Leadership and Legacy in History*. While History Day is generally undertaken as a class project, any 6th –12th graders can participate. Students that participate in History Day are inspired to learn more and are better prepared for college. To learn more, go to [www.okhistory.org/historyday](http://www.okhistory.org/historyday).

# Why Join the Logan County Historical Society?



- Show your support for Logan County historical activities
- Receive quarterly newsletters
- Name recognition on Membership Newsletter
- Invitation to premier actives and events
- Support community collaboration
- Support historic programming and local historical awards
- Individual Memberships are only \$25 and Family Memberships are \$50 a year
- Business Memberships are \$100 a year
- Inquire about additional membership levels and sponsorship opportunities

## Logan County Historical Society Membership Form

Name: \_\_\_\_\_ Business Name \_\_\_\_\_

Address: \_\_\_\_\_

City: \_\_\_\_\_ State: \_\_\_\_\_ Zip: \_\_\_\_\_

Phone: \_\_\_\_\_ Email: \_\_\_\_\_

Date: \_\_\_\_\_ Preferred Communication Method: Email \_\_\_\_\_ Mail \_\_\_\_\_

Membership Level: Individual (\$25) \_\_\_\_\_ Family (\$50) \_\_\_\_\_ Business (\$100) \_\_\_\_\_

Payment: Make checks payable to Logan County Historical Society  
PO Box 1512 Guthrie, OK 73044



### **LCHS Board Members**

Chris Hirzel, President  
Jim Overton, Vice President  
Nathan Turner, Treasurer  
Mike Cheap  
Darrel Covington  
Mary Beth Craven  
Jeff Hirzel  
Jameka Lewis  
Kay Wade  
Kathy Warner  
Ed Woods

### **Staff**

Melissa Fesler, Director FCT  
Amy Loch, Coordinator LCHS

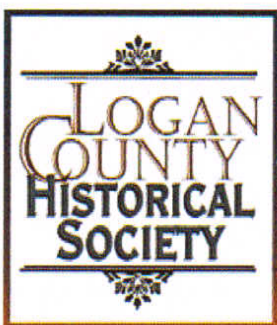
Interested in become a board member? Contact Mary Beth Craven 405-282-1466 for more information.

### **Advertise with the Trolley**

Have your message seen around Guthrie or around Logan, Payne, Lincoln and Oklahoma Counties. Advertising space is available in various sizes on several vehicle locations. Prices start at just \$25.00 a month. Contact [Melissa.trolley@yahoo.com](mailto:Melissa.trolley@yahoo.com) or 405-282-6000 for complete details.

### **Logan County Museum and Historic Activity Directory**

Drug Store Museum, 214 W. Oklahoma Guthrie 405-282-1895  
Frontier Country Museum, 500 N. Grand Crescent 405-969-3660  
Historic Trolley Route, 301 W. Harrison Guthrie 405-282-6000  
Logan County Historical Society 405-282-6000 ex 4  
Oklahoma Territorial Capital Sports Museum, 315 W. Oklahoma Guthrie 405-260-1342  
Oklahoma Territorial Museum 406 E. Oklahoma Guthrie 282-1889  
Owens Art Place, 1202 E. Harrison Guthrie 405-260-0204  
Scottish Masonic Rite Temple, 900 E. Oklahoma Guthrie 282-1281  
Tolson Black Heritage Research Center, Langston 405-466-3346



LCHS, P.O. Box 1512  
Guthrie, Ok 73044